

72

1st SEM 2011/2012



Page 1 of 2

**UNIVERSITY OF SWAZILAND
FINAL EXAMINATION PAPER**

PROGRAMME: B.SC AN.SCI YEAR IV

COURSE CODE: APH 405

TITLE OF PAPER: FISH FARMING

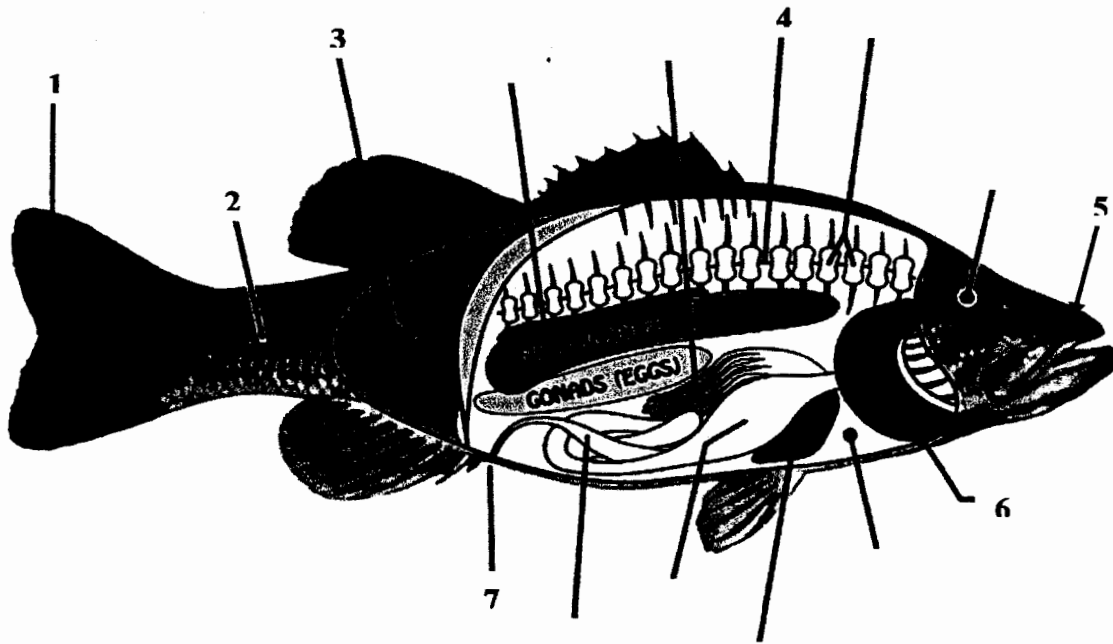
TIME ALLOWED: TWO (2) HOURS

INSTRUCTIONS: ANSWER FOUR (4) QUESTIONS

**DO NOT OPEN THIS PAPER UNTIL PERMISSION HAS BEEN GRANTED BY THE
CHIEF INVIGILATOR**

QUESTION 1

Study the following picture.



- A) Name the structures indicated by numbers and describe their functions on the fish. (21.0 points)
- B) Explain why freshwater fish doesn't drink water. (4.0 points)

QUESTION 2

- A) Write short notes on the soil practical testing in the field for pond construction. (5.0 points)
- B) List the steps taken in pond construction. (20.0 points)

QUESTION 3

- A) Describe the reproduction of *Oreochromis niloticus*. (15.0 points)
- B) Describe the method of controlling the reproduction of *Oreochromis niloticus* using sex-reverse of one of the breeders. (10.0 points)

QUESTION 4

- 1-Discuss the common aquatic plants found in fish ponds. (15.0 points)
- 2-Discuss ways of minimizing entry and eradicating undesirable fish in the pond? (10.0 points)

QUESTION 5

Discuss how can you increase the domestic market of tilapia in Swaziland? (25.0 points)