



PAGE 1 OF 3

UNIVERSITY OF SWAZILAND

2nd SEM. 2012/2013

FINAL EXAMINATION PAPER

PROGRAMME : B. Sc. IN ABE YEAR I, B.Sc. IN AEc & ABMgt
YEAR I, B.Sc. IN AG. ED YEAR I, B.Sc. IN AGRON
YEAR I, B.Sc. IN AN. Sc YEAR I, B.Sc. IN AN. Sc.
Dairy YEAR I, B.Sc. IN FSNT YEAR 1, B.Sc. INCOS
YEAR 1, B.Sc. IN COSE YEAR 1 B.Sc. IN HORT
YEAR 1, B.Sc. INTADM YEAR I.

COURSE CODE : AS 101

TITLE OF PAPER : ZOOLOGY

TIME ALLOWED : TWO HOURS

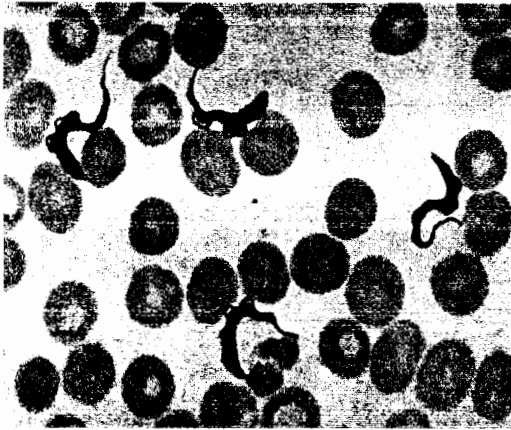
INSTRUCTIONS : ANSWER FOUR QUESTIONS, TWO QUESTIONS
FROM EACH SECTION

**DO NOT OPEN THIS PAPER UNTIL PERMISSION HAS BEEN
GRANTED BY THE CHIEF INVIGILATOR**

QUESTION 1

Observe the pictures below and answer:

1



2



- A) Which Phylum do animals 1 and 2 belong? Briefly describe each Phylum. (15.0 points)
- B) Explain through illustrations translocation and duplication? (10.0 points)

QUESTION 2

- A) List the characteristics used by man to select animals for domestication. (12.0 points)
- B) Explain facilitated diffusion. (8.0 points)
- C) List the nitrogenous organic bases of nucleic acids. (5.0 points)

QUESTION 3

- A) List and briefly describe the three types of ribonucleic acid you know. (10.0 points)
- B) Define essential amino acids and give two examples. (6.0 points)
- C) Explain the objective of meiosis and the life span of daughter cells. (9.0 points)

Section B

PAGE 3 OF 3

QUESTION FOUR

a) Draw and label the structure of the following:

- i- Bone (5.0 points)
 - ii- Avian oviduct (5.0 points)
 - iii- Neuron (5.0 points)
- b) Name five (5) examples of compact organs (5.0 points)
- c) Name three (3) types of blood cells (3.0 points)
- d) Name two (2) types of skeletal tissue (2.0 points)

QUESTION FIVE

a) Explain the function (s) of each of the following:

- i- Connective tissue (5.0 points)
 - ii - Thyroid stimulating hormone (5.0 points)
 - iii- Oxytocin (5.0 points)
- b) Name three (3) types of nerve cells (3.0 points)
- c) Name three (3) types of male accessory glands (3.0 points)
- d) Name four (4) types of cells embedded in the ground substance of the connective tissue (4.0 points)

QUESTION SIX

Compare the following:

- a) Pseudo stratified and Transitional epithelium (5.0 points)
- b) Simple cuboidal and Simple columnar epithelium (5.0 points)
- c) Granulocytes and agranulocytes (5.0 points)
- d) Smooth muscle and Cardiac muscle tissue (5.0 points)
- e) Compound tubular and Compound saccular gland (5.0 points)