

UNIVERSITY OF SWAZILAND

2nd SEM. 2016/2017

RESIT EXAMINATION PAPER

PROGRAMME: All B.Sc. YEAR I

COURSE CODE: ASC 104

TITLE OF PAPER: ZOOLOGY

TIME ALLOWED: TWO (2) HOURS

INSTRUCTIONS: ANSWER ANY FOUR (4) QUESTIONS

DO NOT OPEN THIS PAPER UNTIL PERMISSION HAS BEEN GRANTED BY THE CHIEF INVIGILATOR

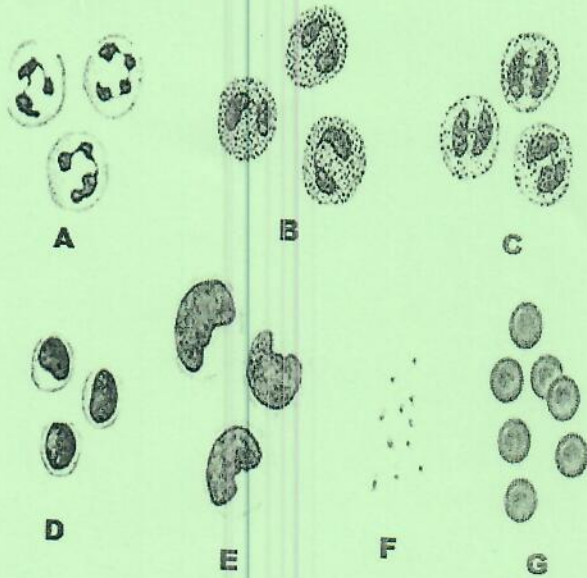
QUESTION 1

- a) List the structures associated with the cell membrane. **(10.0 Marks)**
- b) List and briefly describe all the cell membrane processes. **(15.0 Marks)**

QUESTION 2

- a. Explain three (3) differences between compact glands and tubular glands. **(6.0 Marks)**
- b. List the common physical characteristic of the following phyla: Platyhelminthes, Nematelminthes, Arthropoda and Chordata. **(4.0 Marks)**
- c. Name the tissues labelled A to G in the figure below: **(15.0 Marks)**

Figure 1

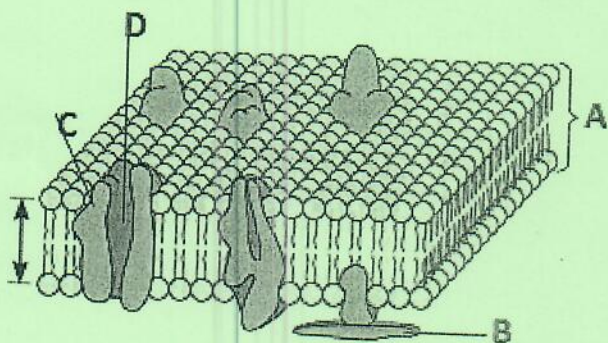


QUESTION 3

- a) Identify the organ shown in figure 2 below and label the components A to D.

(12 Marks)

Figure 2



- b) Which organelle is the control center of the cell?
- c) Which organelle holds the cell together?
- d) Which organelles are not found in animal cells?
- e) List the functions of the two types of endoplasmic reticulum found in a cell.

(3 Marks)

(3 Marks)

(3 Marks)

(4 Marks)

QUESTION 4

a). Examine Figures A to E below. Complete the table. (20 Marks)

Figure 3

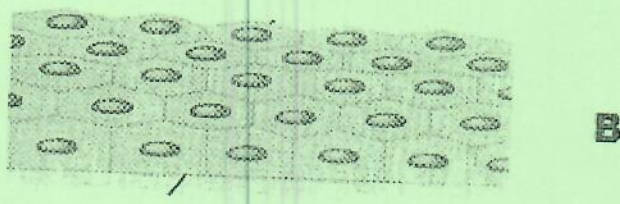
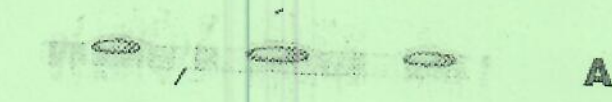
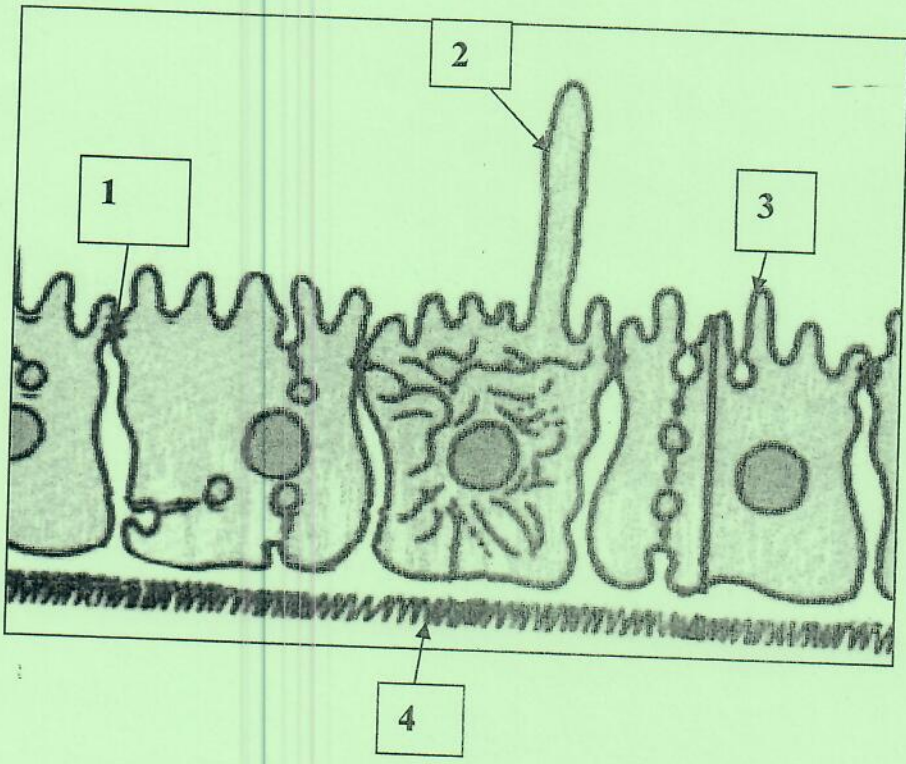


Table 1

Full Name of tissue	Classification	Shape	Site or location

b). Write the names of the structures labelled 1 to 4

Figure 4



QUESTION 5

Write short notes on:

- a). The Clinical significance of white blood cells.
- b). Connective tissues
- c). Identify the organ shown below in Figure 5, the components labelled A to D in Figure 5 below.

(10.0 Marks)

(3.0 Marks)

(12 Marks)

Figure 5

