

1st SEM. 2019/2020

UNIVERSITY OF SWAZILAND

FINAL EXAMINATION PAPER

PROGRAMME: B. Sc. AGRICULTURAL ECONOMICS AND AGRIBUSINESS MANAGEMENT II AND B. Sc. AGRICULTURA EDUCATION III

COURSE CODE: ASC209

TITLE OF PAPER: RUMINANT ANIMAL PRODUCTION

TIME ALLOWED: TWO (2) HOURS

INSTRUCTIONS: ANSWER ANY FOUR (4) QUESTIONS, WITH ATLEAST ONE (1) QUESTION FROM EACH SECTION.

THIS PAPER SHOULD NOT BE OPENED UNTIL THE CHIEF INVIGILATOR HAS GRANTED PERMISSION.

SECTION A**QUESTION 1**

Beef cattle production over the years has been consistently lower on Eswatini Nation Land (ENL) compared with Tittle Deed Land (TLD).

Describe four (4) major factors that contribute to lower beef cattle production on ENL?
(25 Marks)

QUESTION 2

A farmer is keeping Brahman X Simmental crosses in the Middleveld of Eswatini. What breed characteristics do you think this farmer wants to exploit by using crosses of these two breeds?

(25 Marks)

SECTION B**QUESTION 3**

Discuss the following breeds of sheep

a) Black head Persian

(15 marks)

b) Dorper

(15 marks)

QUESTION 4

Discuss the constraints of sheep and goat production in Swaziland.

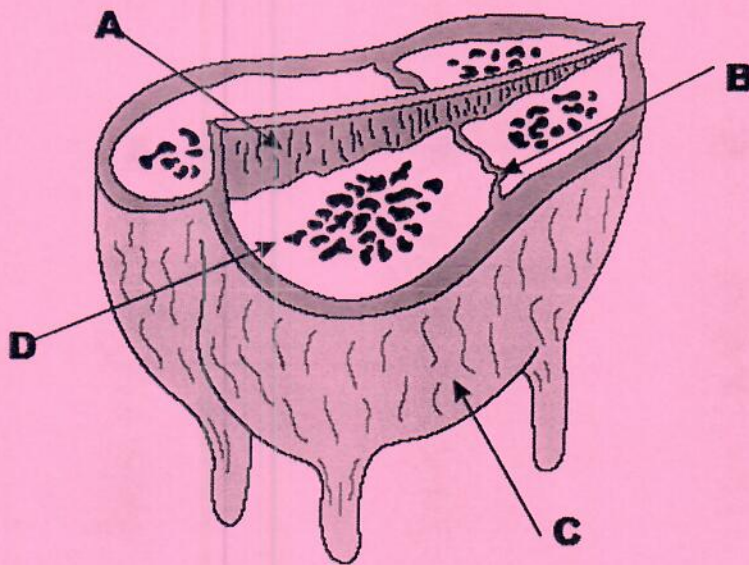
(25 marks)

SECTION C

QUESTION 5

- a) Identify Figure 1 below. Name the parts labeled A to D in the figure.

(10 Marks)



Using Figure 1 above answer the following questions;

- a. Define lactation. (5 Marks)
- b. Explain the necessary components for lactation to occur. (7 Marks)
- c. Name one (1) example of the clinical significance of the anatomical features of Figure 1. (3 Marks)

QUESTION 6

i). Write notes on the following:

- a. Bovine Somatotropin (bST) (5 Marks)
- b. Oxytocin (5 Marks)
- c. Colostrum (5 Marks)

ii). Copy the table onto your answer script and complete it by filling up the empty boxes.

(10 Marks)

Disease/condition	cause	Symptoms	Treatment	Control/prevention
Milk fever				
Bloat				
Ketosis				
Mastitis				
Teat injuries				