

UNIVERSITY OF ESWATINI



FINAL EXAMINATION 2019/20

PAGE 1 OF 2

FINAL EXAMINATION PAPER

PROGRAMME:

B. SC. IN ANIMAL SCIENCE 4

B. SC. IN AGRICULTURAL EDUCATION 4

COURSE CODE:

ASC408/AS 401

TITLE OF THE PAPER:

APICULTURE

TIME ALLOWED:

TWO (2) HOURS

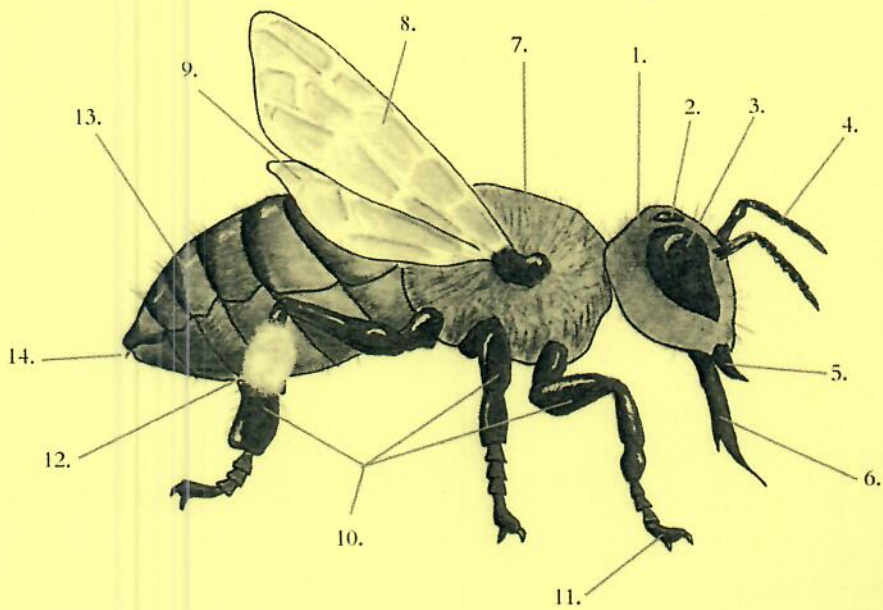
INSTRUCTIONS:

ANSWER ANY FOUR QUESTIONS

**DO NOT OPEN UNTIL PERMISSION HAS BEEN GRANTED BY THE INVIGILATOR**

**Question 1**

a) Label the different parts of a honey bee shown in the picture below. (14 marks)



b) Discuss how honey bees are adapted for pollination. (11 marks)  
(25 marks)

**Question 2**

Discuss the different benefits of honey bees in the Kingdom of Eswatini. (25 marks)

**Question 3**

Describe the major pests of honey bees in the Kingdom of Eswatini and explain how each can be controlled. (25 marks)

**Question 4**

Discuss how honey bees communicate. Give examples in each case. (25 marks)

**Question 5**

A farmer has been getting low honey and has asked you to help inspect his bee hives to find out what has been causing it. Explain the different factors to consider when inspecting a bee hive. (25 marks)