

2<sup>ND</sup> SEM. 2018/19



PAGE 1 OF 4

**UNIVERSITY OF ESWATINI**  
**FINAL EXAMINATION PAPER**

**PROGRAMME :** BACHELOR OF SCIENCE IN CONSUMER  
SCIENCE, CONSUMER SCIENCE EDUCATION  
AND TEXTILE APPAREL DESIGN AND  
MANAGEMENT YEAR I

**COURSE CODE :** TAD102

**TITLE OF PAPER :** APPAREL CONSTRUCTION I

**TIME ALLOWED :** TWO (2) HOURS

**INSTRUCTIONS :** ANSWER QUESTION ONE (1) AND ANY OTHER  
TWO (2) QUESTIONS

**DO NOT OPEN THIS PAPER UNTIL PERMISSION HAS BEEN GRANTED BY THE  
CHIEF INVIGILATOR**

**QUESTION 1 (COMPULSORY)**

- a) Suggest a hand stitch that is suitable for each of the following:
- i) Mending a hem of a school uniform
  - ii) Making a button hole for a skirt
  - iii) Sewing a torn seam of a sleeve.
  - iv) Transferring buttonhole markings onto a pattern. (4 Marks)
- b) Describe **four (4)** ways of identifying the right side of fabric. (4 Marks)
- c) State any **four (4)** rules to observe when doing each of the following:
- i) Preparing pattern before layout.
  - ii) Cutting out pattern pieces.
  - iii) Transferring pattern markings (3x 4 = 12 Marks)
- d) Explain the importance of each of the following processes in apparel construction:
- i) Applying interfacing on collars and facing.
  - ii) Stay stitching necklines
  - iii) Notching seams.
  - iv) Grading seams (8 Marks)
- e) Give a detailed account on how to prepare and attach a flat collar of a child's dress. (12 Marks)
- [TOTAL MARKS = 40]



QUESTION 2

- a) Openings are important when making children's wear.
- i) Name **two (2)** types of openings that can be made on garments. (2 Marks)
  - ii) Explain **four (4)** rules to observe when choosing and making openings for children's wear. (8 Marks)
- b) Using your knowledge of garment construction:
- i) Name **four (4)** ways of disposing off fullness on a garment. (4 Marks)
  - ii) Explain the steps to follow when making a single pointed dart on a garment. (4 Marks)
- c) Pockets are important components of a garment. Briefly describe how to prepare and attach a patch pocket onto a garment. (12 Marks)

[TOTAL MARKS = 30]

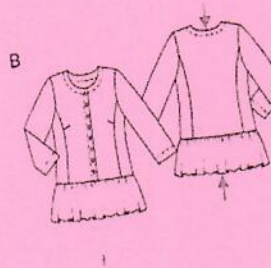
QUESTION 3

- a) Draw each of the following pattern markings commonly used when making a garment:
- i) Place on fold
  - ii) Dart
  - iii) Grain line
  - iv) Lengthening and shortening line.
  - v) Stitching line.
  - vi) Start and stop sewing (6 Marks)
- b) Why is it important to take body measurements before making a garment? (3 Marks)
- c) State **five (5)** rules to observe when taking body measurements. (5 Marks)
- d) With the help of diagrams, explain steps to follow when cutting and joining a crossway strip. (8 Marks)
- e) Briefly explain how to sew a flat button onto a garment. (8 Marks)

[TOTAL MARKS=30]

QUESTION 4

- a) Which part of the sewing machine performs each of the following functions:
- i) Stops movement of a sewing machine.
  - ii) Controls the movement of fabric during sewing
  - iii) Let you select the right tightness or looseness of stitch.
  - iv) Guides movement of the thread during sewing. (4 Marks)
- b) The pattern envelope contains information that is crucial when intending to make a garment.
- i) State the importance of notions. (2 Marks)
  - ii) Explain how the fabric chart is used. (4 Marks)
  - iii) Briefly give a description of front and back view of the garment style below. (6 Marks)



- c) Hems are essential when making a garment.
- i) List **three (3)** types of hems that can be made on garments. (3 Marks)
  - ii) What determines the size of a hem to be made on a garment? (2 Marks)
  - iii) Which **three (3)** hand stitches are used to secure a hem? (3 Marks)
  - iv) Briefly describe the procedure of making a straight hem on a skirt. (6 Marks)

[TOTAL MARKS = 30]