

1ST SEM.2018/19

PAGE 1 OF 4



UNIVERSITY OF ESWATINI
FINAL EXAMINATION PAPER

PROGRAMME : BACHELOR OF SCIENCE IN CONSUMER SCIENCE,
CONSUMER SCIENCE EDUCATION AND TEXTILE AND
APPAREL DESIGN MANAGEMENT YEAR II

COURSE CODE : TAD203

TITLE OF PAPER : PATTERN DRAFTING

TIME ALLOWED : TWO (2) HOURS

INSTRUCTION : ANSWER QUESTION ONE (1) AND ANY OTHER
TWO (2) QUESTIONS

**DO NOT OPEN THIS PAPER UNTIL PERMISSION HAS BEEN GRANTED BY THE
CHIEF INVIGILATOR**

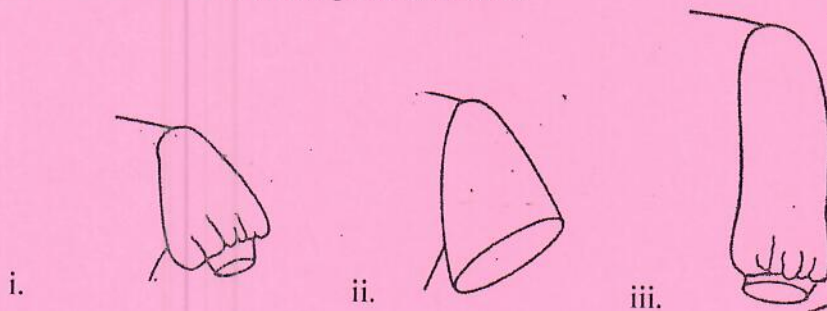
QUESTION 1 (COMPULSORY)

(a) Explain the functions of each of the following tools in pattern drafting.

- (i) Compass
- (ii) L-shaped ruler
- (iii) Awl
- (iv) French curve

(b) Name the sleeves shown on the pictures below.

(2x4=8 Marks)



(c) Using the half scale block for the sleeve:

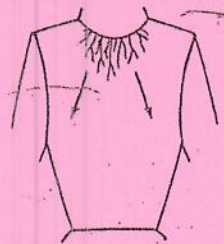
(3 Marks)

- (i) Demonstrate how the sleeve in (b) i. was adapted from the basic block.
- (ii) Write down the steps followed in the adaptation.
- (iii) Complete the pattern with adequate labels and pattern markings.

(d) Using the half scale bodice block for the design below:

(4+4+2=10 Marks)

- (i) Manipulate the darts to produce a pattern for the front bodice using the pivot method.
- (ii) Write down the steps followed during the adaptation
- (iii) Complete the pattern with adequate labels and pattern markings.



(e) What are the differences between?

(4+4+2=10 Marks)

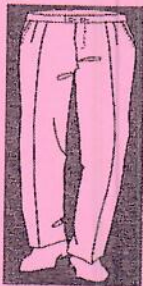
- (i) A basic pattern
- (ii) A sloper

(5+4=9 Marks)

[TOTAL MARKS=40]

QUESTION 2

- (a) Using the front half scale pants' block for the design below:
- Adapt the darts to make two pleats using the slit method.
 - Write down the steps followed in the adaptation.
 - Complete the pattern with necessary labels and pattern markings.



- (b) Compare the differences between bodice patterns of **females** and **males** with reference to the silhouette and center front opening. (4+4+2=10 Marks)
- (c) Explain the importance of the use of different types of ease in garment construction. (8 Marks)
- (d) Give **three (3)** reasons for using an interlining on a waistband. (3x3=9 Marks)
- (3 Marks)

[TOTAL MARKS=30]

QUESTION 3

- (a) Necklines are usually finished with facings.
- Using half-scale front bodice block, draft a neckline center front facing that extends pattern to the armseye of the bodice front.
 - Write down the steps followed when drafting the facing.
 - Give **two (2)** advantages of using the facing from (a) (i) above. (4+4+2=10 Marks)
- (b) Buttons are used to fasten openings.
- Mark the position of a button on the front center bodice in (a) (i) above.
 - State a rule for positioning a button. (2+2=4 Marks)
- (c) Describe the qualities of the best tape measure to use when taking body measurements. (5 Marks)
- (d) Outline the steps followed when taking body measurements for pattern drafting (5 Marks)

- (e) Explain how the following neckline problems can be corrected?
- Neckline too tight, cutting into neck
 - Neckline too wide

(3+3=6 Marks)

[TOTAL MARKS=30]

QUESTION 4

- (a) Collars are a style feature which is always popular.
- Draw the front view and back view of a peter pan collar (4 Marks)
 - Describe the Peter Pan collar. (4 Marks)
- (b) Illusion occur as lines, shapes, colours, fabrics and patterns interact with one another.
- Design a shirt with a collar, long sleeves and cuffs suitable for a man with a triangular figure type using the attachment at the back. (5 Marks)
 - State the **four (4)** reasons for the choice of the shirt design in (b) i) above. (4 Marks)
- (c) Using the quarter scale front block for the skirt below:
- Manipulate the hip darts to produce a pattern for the skirt shown below using the pivot method.
 - Write down the steps followed in the adaptation.
 - Complete the pattern with adequate labels and pattern markings.



(4+4+2=10 Marks)

- (d) Explain the meaning of the following pattern markings.



(3 Marks)

[TOTAL MARKS=30]

Attachments

