

1<sup>ST</sup> SEM. 2018/19



PAGE 1 OF 4

**UNIVERSITY Of ESWATINI**  
**RE-SIT EXAMINATION PAPER**

**PROGRAMME :** BACHELOR OF SCIENCE IN CONSUMER SCIENCE,  
CONSUMER SCIENCE EDUCATION AND TEXTILE AND  
APPAREL DESIGN MANAGEMENT YEAR II

**COURSE CODE :** TAD203

**TITLE OF PAPER :** PATTERN DRAFTING

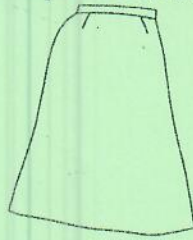
**TIME ALLOWED :** TWO (2) HOURS

**INSTRUCTION :** ANSWER QUESTION ONE (1) AND ANY OTHER  
TWO (2) QUESTIONS

**DO NOT OPEN THIS PAPER UNTIL PERMISSION HAS BEEN GRANTED BY THE  
CHIEF INVIGILATOR**

QUESTION 1 (COMPULSORY)

- (a) Using the slash method to add flare to a skirt block:
- Adapt one dart from the basic skirt quarter scale-block.
  - Write down the steps followed in the adaptation.
  - Complete the pattern with adequate labels and pattern markings.



- (b) Explain the correct method of marking a hem for a skirt or trouser.

(4+4+2=10 Marks)

- (c) Using sketches show how the collar for the shirt below was developed:

(5 Marks)

- Sketch the steps followed in the development of the collar.
- Write down the steps followed in the development of the collar.
- What is the name of the collar?



- (d) Explain briefly **four (4)** points on how designers get inspired to produce different styles in the clothing industry.

(4+4+2=10 Marks)

- (e) Give **Five (5)** rules for folding darts.

(2x4=8 Marks)

- (f) Explain the term draping in pattern drafting.

(5 Marks)

(2 Marks)

[TOTAL MARKS=40]



QUESTION 2

- (a) Analyze the design below for the halter style bodice yoke:
- Adapt the darts using the pivot method, use the half-scale bodice block to produce gathers and the yoke.
  - Outline the steps followed in the adaptation.
  - Complete the pattern with pattern markings.

**NOTE:** Yoke is 1 cm wide.



- (b) Explain the following terms used in pattern drafting.

(4+3+1=8 Marks)

- Trueing
- Grading
- Apex
- Squaring line

- (c) Demonstrate **five (5)** ways on how darts are used to create designs in pattern adaptation.

(2x4=8 Marks)

- (d) Describe the bust circle on the front bodice.

(2x5=10 Marks)

(4 Marks)

[TOTAL MARKS=30]

QUESTION 3

- (a) If a style does not suit your figure you will not look smart.  
Mention **four (4)** style features which would be suitable for a girl with a plumpy figure.

(4 Marks)

- (b) What is the visual effect of the fabric designs with the following style lines on the silhouette

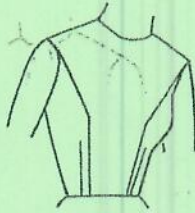
- Vertical lines
- Horizontal lines
- Diagonal lines
- Curved lines

- (c) Differentiate between a sleeve front and a sleeve back for a female one-piece sleeve pattern?

(4 Marks)

(2 Marks)

- (d) Using the front half-scale block for the design below:
- Adapt darts using the measurement method and slit method.
  - Outline the steps followed in the adaptation of the design.
  - Complete pattern with pattern markings.



- (e) Write down the correct order of assembling the toile.

$((3+2)+(4+4)+2)=15$  Marks)

(5 Marks)

[TOTAL MARKS=30]

#### QUESTION 4

- (a) Discuss the benefits of applying the study of making patterns by the flat pattern method. (15 Marks)
- (b) Draw the following types of pleats.
- Box pleats
  - Inverted pleats
  - Knife pleats
- (c) Facings can be used on almost any edge of a garment. (2x3=6 Marks)
- Why is a crossway facing used for finishing necklines? (2 Marks)
  - Draw and label the grains on a piece of fabric showing the warp, weft, selvedge, true cross and raw edge.

(5+2=7 Marks)

[TOTAL MARKS=30]