



1ST SEM. 2018/19

PAGE 1 OF 3

**UNIVERSITY OF ESWATINI
RE-SIT EXAMINATION PAPER**

**PROGRAMME : BACHELOR OF SCIENCE IN TEXTILE
APPAREL DESIGN AND MANAGEMENT YEAR
III**

COURSE CODE : TAD305

TITLE OF PAPER : APPAREL CONSTRUCTION III

TIME ALLOWED : TWO (2) HOURS

**INSTRUCTIONS : ANSWER QUESTION ONE (1) AND ANY OTHER
TWO (2) QUESTIONS**

**DO NOT OPEN THIS PAPER UNTIL PERMISSION HAS BEEN GRANTED BY
THE CHIEF INVIGILATOR**

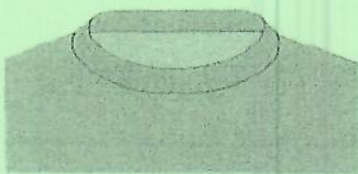
QUESTION 1 (COMPULSORY)

- a) Explain the following as they relate to the use of rosettes for apparel embellishment.
- i) **Two (2)** points on the selection of suitable fabric for rosettes. **(4 Marks)**
- ii) **Two (2)** positions and **two (2)** arrangements on a garment where and how rosettes may be placed. **(8 Marks)**
- iii) Name **three (3)** types of apparel on which rosettes may be used. **(6 Marks)**
- b) Use diagrams to outline the construction sequence of a French cuff. **(12 Marks)**
- c) Discuss **five (5)** ways in which Apparel Construction III has improved your skills and explain how each will be useful in your profession. **(10 Marks)**

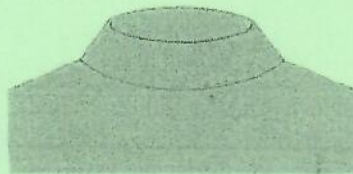
[TOTAL MARKS = 40]

QUESTION 2

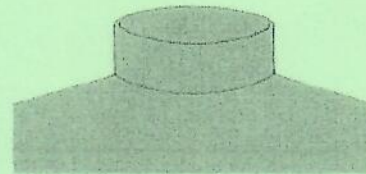
- a) Outline **six (6)** steps for making a decorative bow. **(12 Marks)**
- b) Outline the construction and attachment sequence of a fully lined squared patch pocket. **(12 Marks)**
- c) Name and describe each of the stretchy necklines on the figure below. **(6 Marks)**



i)



ii)

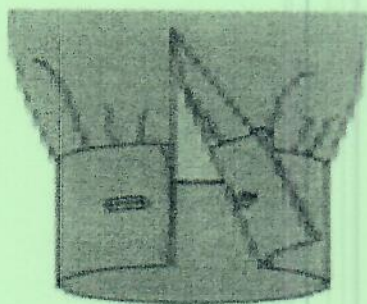


iii)

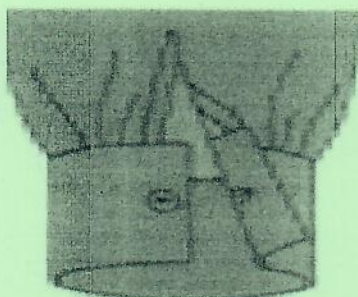
[TOTAL MARKS = 30]

QUESTION 3

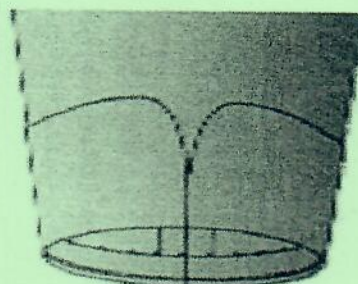
- a) Explain how you would construct a single welt pocket. (12 Marks)
- b) Discuss **three (3)** instances when hem facing may be used in apparel construction. (9 Marks)
- c) Name and differentiate between the **three (3)** types of cuffs below. (9 Marks)



i)



ii)



iii)

[TOTAL MARKS = 30]

QUESTION 4

- a) What determines each of the following in the use of ruffles in apparel construction?
- Type and weight of fabric
 - Type of hem
 - The length and depth of the ruffle
 - Type of ruffle to use
- (12 Marks)
- b) What is the major difference between the one-piece and two-piece Raglan sleeves? Illustrate your answer. (8 Marks)
- d) Describe a bound buttonhole. Give **three (3)** reasons why a cord is used on bound buttonholes. (4 + 6 = 10 Marks)

[TOTAL MARKS = 30]