

1<sup>ST</sup> SEM. 2019/2020



PAGE 1 OF 5

**UNIVERSITY OF ESWATINI**  
**FINAL EXAMINATION PAPER**

**PROGRAMME** : **BACHELOR OF SCIENCE IN CONSUMER  
SCIENCE CONSUMER SCIENCE EDUCATION  
AND TEXTILES, APPAREL DESIGN AND  
MANAGEMENT YEAR II**

**COURSE CODE** : **TAD 203**

**TITLE OF PAPER** : **APPAREL PATTERN DESIGN**

**TIME ALLOWED** : **TWO (2) HOURS**

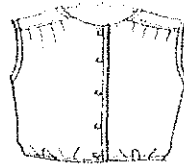
**INSTRUCTION** : **ANSWER QUESTION ONE (1) AND  
ANY OTHER TWO (2) QUESTIONS**

**DO NOT OPEN THIS PAPER UNTIL PERMISSION HAS BEEN GRANTED BY THE  
CHIEF INVIGILATOR**

**QUESTION 1 (COMPULSORY)**

a) With reference to the design below:

- i) Analyze the design below. (4 Marks)
- ii) Use the slit method to adapt the bodice front from a basic block attached (6 Marks)
- iii) Show the necessary labels and pattern markings on the patterns generated in ii). (2 Marks)



b) Define the following terms used in pattern drafting.

- i) Cross mark
- ii) Draping
- iii) Croquis.
- iv) Apex
- v) Armseye

(5x2=10 Marks)

c) Describe the characteristics of an ideal figure type for a female.

(3 Marks)

d) Explain the following male body shapes.

- i) Ectomorph
- ii) Endomorph
- iii) Mesomorph

(3x2=6 Marks)

- e) Suggest **five (5)** suitable styles of clothing for a female with a tall slim figure (include a sketch of a dress). (5+4=9 Marks)

[TOTAL MARKS=40]

**QUESTION 2**

- a) How are the following measurements correctly taken on the body?

- i) Crotch depth
- ii) Crotch length
- iii) Hip
- iv) Sleeve length
- v) Front shoulder slope

(5x2=10 Marks)

- b) Darts can be used in many ways to create designs. Sketch a design for each of the following uses:

- i) Darts can be converted to gathers
- ii) Darts can be converted into seams
- iii) Darts can be converted to flare in skirts
- iv) Darts can be released to make a tent dress

(4x2=8 Marks)

- c) How do you determine the dart length and shape?

(2x5=10 Marks)

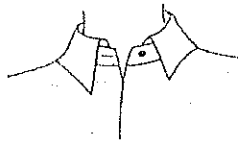
- d) What is a dart?

(2 Marks)

[TOTAL MARKS=30]

**QUESTION 3**

- a) Explain in details the term pattern. (6 Marks)
- b) Using the front and back bodice blocks at the back:
- i) Adapt the collar shown below (6 Marks)
  - ii) Write down the steps followed in the adaption (6 Marks)
  - iii) Complete the patterns with adequate labels and markings (2 Marks)
  - iv) What is the name of the collar? (1 Mark)

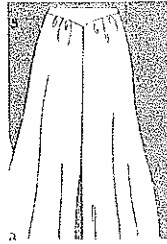


- c) How are accurate body measurements taken before drafting patterns? Give **five (5)** points. (5 Marks)
- d) State **four (4)** types of facings. (4 Marks)

**[TOTAL MARKS=30]**

QUESTION 4

a) With reference to the design below:



- i) Using the slash method, adapt the pants front from the block at the back. (4 Marks)
  - ii) Write down the steps followed in the adaptation of the pattern. (4 Marks)
  - iii) Show all the necessary labels and pattern markings on the patterns (2 Marks)
- b) Using quarter scale blocks of front and back bodices of sleeves:
- i) Demonstrate how a kimono sleeve is adapted from the basic blocks. (3+3=6 Marks)
  - ii) State **one (1)** similarity and **one (1)** difference between the kimono and raglan sleeves. (2 Marks)
  - iii) Give **one (1)** reason for using raglan sleeves on many garments. (2 Marks)
- c) Differentiate between a commercial pattern and sloper of a bodice. (5 x 2=10 Marks)

[TOTAL MARKS=30]

