

1ST SEM. 2019/2020



PAGE 1 OF 5

UNIVERSITY OF ESWATINI
RE-SIT EXAMINATION PAPER

PROGRAMME : BACHELOR OF SCIENCE IN CONSUMER
SCIENCE CONSUMER SCIENCE EDUCATION
AND TEXTILE. APPAREL DESIGN AND
MANAGEMENT YEAR II

COURSE CODE : TAD203

TITLE OF PAPER : APPAREL PATTERN DESIGN

TIME ALLOWED : TWO (2) HOURS

INSTRUCTION : ANSWER QUESTION ONE (1) AND
ANY OTHER TWO (2) QUESTIONS

**DO NOT OPEN THIS PAPER UNTIL PERMISSION HAS BEEN GRANTED BY THE
CHIEF INVIGILATOR**

QUESTION 1 COMPULSORY

- a) Discuss **four (4)** advantages of studying the flat method of pattern drafting.

(4x3=12 Marks)

- b) Explain the following terms used in pattern drafting.

- i) Trueing darts
- ii) Seams on patterns
- iii) Using tools
- iv) Punch holes
- v) Grain lines

(5x2=10 Marks)

- c) Use the attached quarter scale skirt back block:

- i) Adapt one dart using the slit method to produce an inverted pleat for the design below.

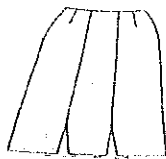
(4 Marks)

- ii) Outline the **four (4)** steps followed in the adaptation of i) ci).

(4 Marks)

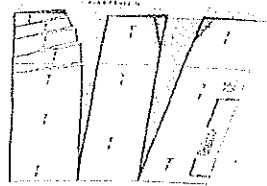
- iii) Sketch and complete the pattern with adequate labels and pattern markings.

(2 Marks)

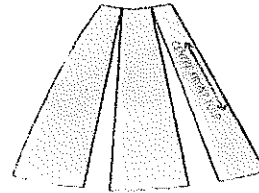


d) Illustrate the skirt front designs that will be made from the patterns below:

A



B



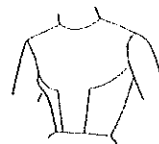
(4+4=8 Marks)

[TOTAL MARKS = 40]

QUESTION 2

a) Use the attached quarter scale front bodice block:

- i) Outline the steps followed in the adaptation of the design in (v). (4 Marks)
- ii) Sketch the patterns for the bodice front below obtained after adaptation. (4 Marks)
- iii) Sketch a shaped front facing for the bodice front below. (2 Marks)
- iv) Complete the patterns with necessary labels and markings in (ii). (2 Marks)
- v) Analyse the design below. (2 Marks)



b) Use attached quarter scale front bodice block:

- i) Insert bust circle. (1 Mark)
- ii) Mark **five (5)** possible dart positions. (5 Marks)

- c) How would you correct the following fitting problems on a skirt or trouser?
- Sway back causing wrinkles across back below waist line.
 - Skirt or trouser sagging between waist and hips with a hem line longer at the back.

(2x5=10 Marks)

[TOTAL MARKS = 30]

QUESTION 3

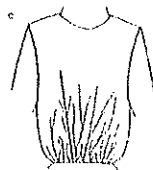
- a) Describe **two (2)** methods of locating the bust point. (2 x 3 = 6 Marks)

- b) Analyse and explain the differences between the designs below:

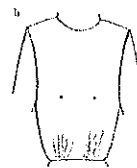
Design 1



Design 2



Design 3



(3x2=6 Marks)

- c) Before cutting patterns from an expensive fabric, a learner must sew a test garment.
- Give two reasons for constructing a test garment. (2 Marks)
 - Outline the important points to consider in the construction of a test garment. (8 Marks)
 - Explain how you estimated the required amount of fabric for constructing the test garment. (8 Marks)

[TOTAL MARKS = 30]

QUESTION 4

- a) Sketch the following cuffs:
- i) Ruffle cuff (2 Marks)
 - ii) Circular cuff (2 Marks)
 - iii) One button straight cuff (2 Marks)
- b) Draw and label a basic fitted long-sleeve pattern (6+4=10 Marks)
- c) Differentiate between personal body measurement and standard body measurements as used in pattern drafting (2x2=4 Marks)
- d) Give **three (3)** reasons for using an interlining when constructing a waistband. (3 Marks)
- e) Illustrate and explain how a crossway strip is cut from a woven fabric. (4+3=7 Marks)

[TOTAL MARKS = 30]

