

**UNIVERSITY OF SWAZILAND**  
**DEPARTMENT OF ADULT EDUCATION**  
**PART-TIME DIPLOMA IN ADULT EDUCATION (YEAR I)**  
**FINAL EXAMINATION PAPER, MAY 2008**

**TITLE OF PAPER** : **RESEARCH AND EVALUATION**

**COURSE CODE** : **AE 104**

**TIME ALLOWED** : **THREE (3) HOURS**

**INSTRUCTIONS** :

- 1. ANSWER ALL QUESTIONS FROM SECTION A.**
- 2. ANSWER ANY FOUR QUESTIONS FROM SECTION B.**
- 3. ALL QUESTIONS IN SECTION B CARRY EQUAL MARKS.**

**THIS PAPER IS NOT TO BE OPENED UNTIL PERMISSION HAS BEEN GIVEN BY THE INVIGILATOR**

**SECTION A: COMPULSORY**

INSTRUCTIONS: ANSWER ALL QUESTIONS

**QUESTION 1**

The basic purpose of evaluation is to:

- (a) test judgemental hypotheses
- (b) improve decision making
- (c) test generalisability of formative data
- (d) validate the findings of basic research in field settings

[2 marks]

**QUESTION 2**

The major difference between formative and summative evaluation is that

- (a) formative evaluation relies on basic research methodology, whereas summative evaluation relies on applied research
- (b) formative evaluation is more time-consuming than summative evaluation
- (c) formative evaluation is more likely to be carried out in field settings than summative evaluation
- (d) formative evaluation and summative are conducted at different stages of programme development.

[2 marks]

**QUESTION 3**

The following are characteristics of the scientific method, except for

- (a) definition of the problem in specific terms
- (b) development of hypotheses
- (c) analysis of data
- (d) verification of hypotheses using expert opinion

[2 marks]

**QUESTION 4**

Applied research is concerned with

- (a) solving immediate problems
- (b) experimental studies
- (c) correlational studies
- (d) laboratory problems

[2 marks]

**QUESTION 5**

A critical review of literature of previous research

- (a) should be conducted for every problem encountered by the programme manager.
- (b) is important to researchers in education but not to practitioners.
- (c) helps the researcher to get to the frontiers of knowledge in his research topic.
- (d) is not necessary if the researchers carries out a pilot study.

[2 marks]

**QUESTION 6**

When the experimenter has a reasonably high expectation concerning the relationship that exist between the variables it is most appropriate to state the hypothesis in \_\_\_\_\_ form.

- (a) directional
- (b) non-directional
- (c) null
- (d) interrogative

[2 marks]

**QUESTION 7**

Empowerment is a characteristic of

- a) experimental research
- b) survey research
- c) participatory research
- d) historical research

[2 marks]

**QUESTION 8**

A general term that is used to describe a distribution of data that is not symmetrical is a

- (a) bell shaped distribution
- (b) normal distribution
- (c) abnormal distribution
- (d) skewed distribution

[2 marks]

**QUESTION 9**

Why is it necessary that a mailed questionnaire be accompanied by a covering letter?

[4 marks]

**SECTION B**

**INSTRUCTIONS: ANSWER ANY FOUR QUESTIONS**

**QUESTION 10**

(a) Explain the following characteristics of experimental research

- (i) comparison
- (ii) manipulation
- (iii) control
- (iv) generalisation

[10 marks]

(b) Write notes on the following:

- (i) Adversary evaluation
- (ii) Formative and Summative evaluation

**QUESTION 11**

- (a) You are asked by the adult education programme manager to conduct an evaluation of the programme. When you, as an evaluation, ask the manager what it is about the programme that he wants assessed, he responds. "I do not know. What do you usually evaluate? How would you respond to this question?" [10 marks]
- (b) Why is it important to adhere to research ethics in conducting research in education and social sciences? [10 marks]

**QUESTION 12**

- (a) Mention the reasons for using samples in conducting research. [10 marks]
- (b) Explain the following sampling techniques. [10 marks]
- i. Quota sampling
  - ii. Convenience sampling

**QUESTION 13**

- (a) List FOUR guidelines for the construction of a good questionnaire. [10 marks]
- (b) What guidelines should be followed in conducting face-to-face interview? [10 marks]

**QUESTION 14**

Use the grouped data frequency distribution shown below to calculate the mean. Use the formular

$\frac{\sum fx}{\sum f}$

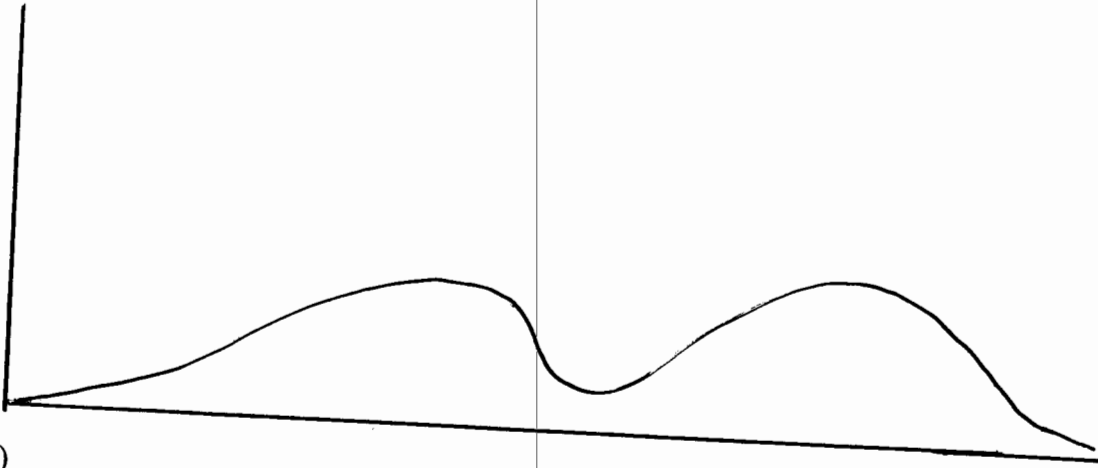
$\sum f$

Class interval	f
10-19	2
20-29	5
30-39	12
40-49	17
50-59	14
60-69	7
70-79	2

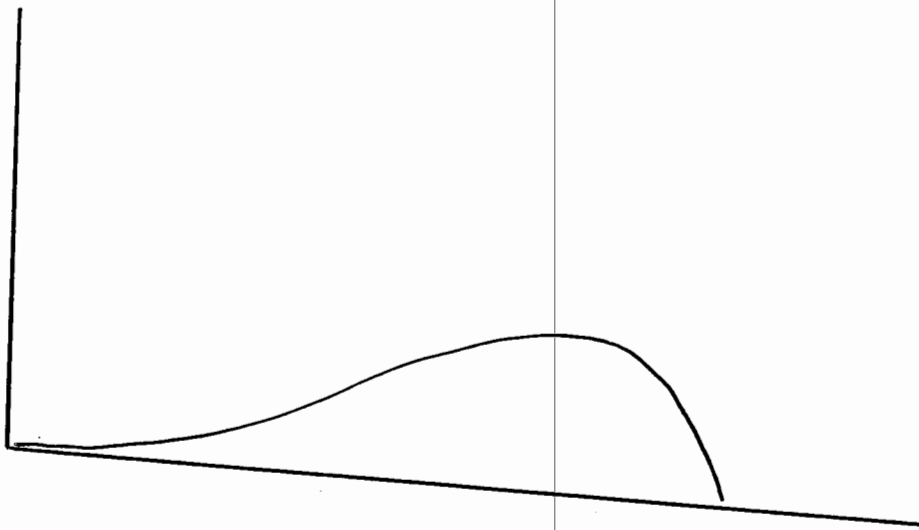
[14 marks]

Label the drawings below showing the positions of the mode, mean and median

(i)



(ii)



[6 marks]