

**UNIVERSITY OF SWAZILAND
FACULTY OF EDUCATION
DEPARTMENT OF EDUCATIONAL FOUNDATIONS AND
MANAGEMENT
2006/2007**

FINAL EXAMINATION PAPER 2007

MASTER OF EDUCATION [M.Ed]

COURSE NUMBER : EDF 619

TITLE OF PAPER : SPECIAL EDUCATION

TIME ALLOWED : THREE (3) HOURS

INSTRUCTIONS :

- 1. ANSWER QUESTION 1 (ONE)
[IT IS COMPULSORY]**

- 2. ANSWER ANY OTHER THREE
QUESTIONS FROM QUESTIONS 2,
3, 4 AND 5**

- 3. FOUR QUESTIONS MUST BE
ANSWERED**

**DO NOT OPEN THIS QUESTION PAPER UNTIL THE INVIGILATOR
HAS GIVEN YOU PERMISSION TO DO SO.**

EDF 619 FINAL 2007

QUESTION 1 [COMPULSORY]

- (a) Label the diagram of the Human Eye on the answer sheet provided for this final examination.

[10 marks]

- (b) Describe the specific skills needed to work as a Special Education Teacher of the Hearing and Visually Impaired children in the Kingdom of Swaziland.

[30 marks]

Total = 40 marks

QUESTION 2

- (a) Explain the concept of CULTURE.

[5 marks]

- (b) Discuss the effects of culture on the life of the disabled child in the school system and the wider society in Swaziland.

[15 marks]

Total = 20 marks

QUESTION 3

- (a) Outline the objectives of Salamanca Proclamation (1994).

[5 marks]

- (b) Explain the basic measures which Swaziland can adopt in addressing the issue of inclusive education in the 21st century.

[15 marks]

Total = 20 marks

EDF 619 FINAL 2007

QUESTION 4

Write explanatory and illustrative notes on the following concepts in Special Education:

- | | | |
|-----|----------------------------------|------------|
| (a) | Sequencing Disabilities | [5 marks] |
| (b) | Vestibular Perception Disability | [5 marks] |
| (c) | Organisation Disability | [5 marks] |
| (d) | Visual Perception Disability | [5 marks] |

Total = 20 marks

QUESTION 5

- (a) Identify and define eight common types of emotional and behavioural distress often found among school children.
[8 marks]
- (b) Explain the significant characteristics of students with hearing impairment.
[12 marks]

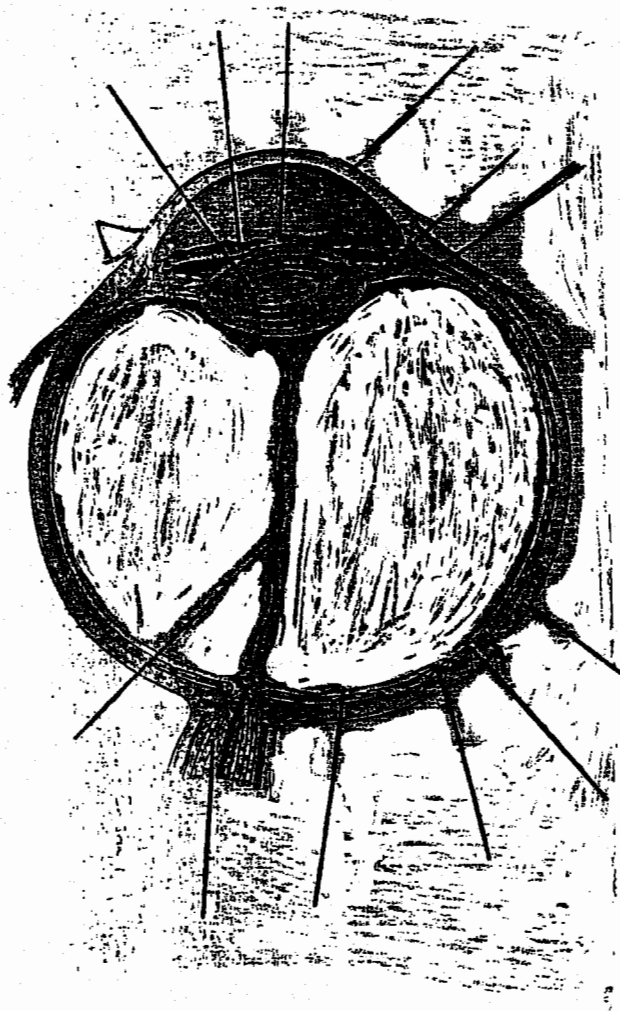
Total = 20 marks

Total = 100 marks

QUESTION 1a

QUESTION 1a

Label the diagram of the Human Eye.



A DIAGRAM OF HUMAN EYE