

UNIVERSITY OF SWAZILAND



INSTITUTE OF POST GRADUATE STUDIES

**DEPARTMENT OF EDUCATIONAL FOUNDATIONS AND MANAGEMENT
2008/2009**

**FINAL EXAMINATION PAPER
MASTER OF EDUCATION (M.Ed)**

- SEMESTER** : **FIRST SEMESTER**
- TITLE OF PAPER** : **SPECIAL EDUCATION I**
- COURSE CODE** : **EDF 644**
- TIME ALLOWED** : **THREE (3) HOURS**
- INSTRUCTIONS** :
- 1. THERE ARE THREE QUESTIONS ONLY**
 - 2. ANSWER QUESTION ONE (1) [IT IS COMPULSORY]**
 - 3. ANSWER ANY OTHER TWO QUESTIONS**

THIS PAPER IS NOT TO BE OPENED UNTIL PERMISSION HAS BEEN GRANTED TO DO SO BY THE CHIEF INVIGILATOR.

QUESTION 1 [COMPULSORY]

- (a) Label the blank parts of the Human Eye. Use the answer sheet which is provided for this final examination. [18 marks]
- (b) "Teachers working with children who are visually-impaired require specific knowledge and skill sets" (Anonymous, 2008).

Explain your justifications for this assertion, and highlight the specific knowledge and skills required by the teachers. [22 marks]

Total = [40 marks]

QUESTION 2

- (a) Define the concept of 'Special Educational Needs'. [5 marks]
- (b) Explain the rationale behind 'Special Educational Needs' [10 marks]
- (c) Describe the categories of learners who can benefit from 'Special Educational Needs' in Swaziland. [15 marks]

Total = [30 marks]

QUESTION 3

- (a) What are emotional disturbances and/or behaviour disorders? [5 marks]
- (b) Highlight common types of emotional and behavioural distress which are characteristics of students. [10 marks]
- (c) Explain how a teacher should deal with a student with 'conduct disorder' in his classroom. [15 marks]

Total = [30 marks]

QUESTION 4

- (a) What is 'Learning Impairment?' [5 marks]
- (b) Explain how a classroom teacher can identify Visual Perception Disabilities among school children. [25 marks]

Total = [30 marks]

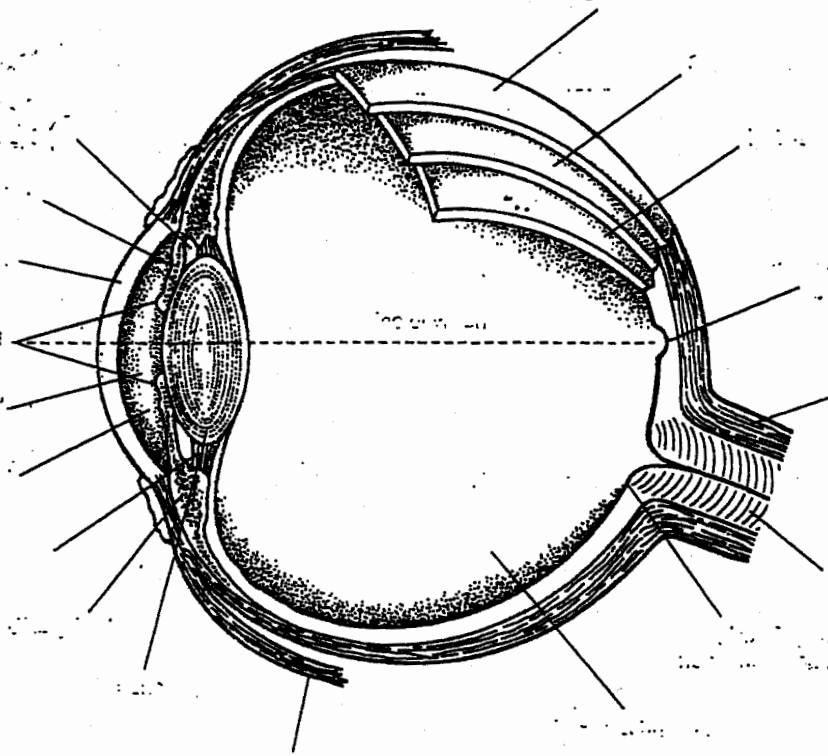
UNIVERSITY OF SWAZILAND

INSTITUTE OF POST-GRADUATE STUDIES

DEPT OF EDUCATIONAL FOUNDATIONS AND MANAGEMENT

2008/2009

EDF 644: SPECIAL EDUCATION I.



The structure of the eye

Question 1(a) (Compulsory)

Label the blank parts of the Human Eye.
on this answer sheet. [18 marks]