

UNIVERSITY OF SWAZILAND
Faculty of Health Sciences

**DIPLOMA IN ENVIRONMENTAL HEALTH
SCIENCES**
MAIN EXAMINATION PAPER MAY 2011

TITLE OF PAPER : HOUSING AND HEALTH

COURSE CODE : EHS 304

DURATION : 2 HOURS

TOTAL MARKS : 100

INSTRUCTIONS : ANSWER ANY FOUR QUESTIONS

: EACH QUESTION CARRIES 25 MARKS

**: BEGIN EACH QUESTION ON A
SEPARATE SHEET OF PAPER**

**DO NOT OPEN THIS QUESTION PAPER UNTIL PERMISSION IS
GRANTED BY THE INVIGILATOR**

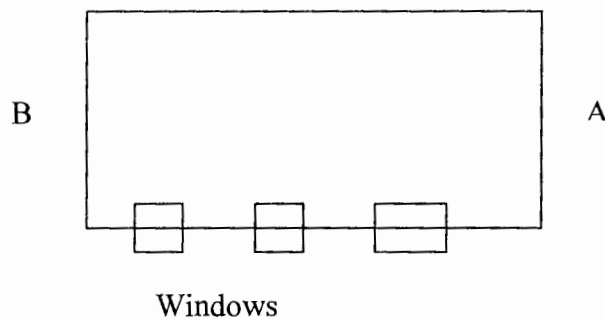
EHS 304 P MAY 2011 HOUSING AND HEALTH

QUESTION ONE

- A) By means of sketch diagrams describe the following house layouts that may be set in a residential settlement [8]
- Terraced
 - Detached
 - Semi detached
 - High rise
- B) Suggest five policy issues aimed at addressing unfit housing [5]
- C) A City Planner from the Municipal Council of Manzini insists that all human settlements in Manzini must be planned such that there is a cul-de-sac. Suggest the reasoning behind [5]
- D) Outline the conditions that abound in an ill ventilated house [7]

QUESTION TWO

- A) Consider the following as a classroom.



- Where would you not position the writing board? Is it A or B. give reasons. [5]
 - What is the required illumination for an ordinary classroom [5]
 - What are the factors affecting quality of natural light reaching indoor environments [5]
- B) Comment on why development of a city is important and state the key principles of Urban Management Development [5]
- C) Discuss how has housing become an instrument for economic empowerment and poverty alleviation policies for low income urban settlements. [5]

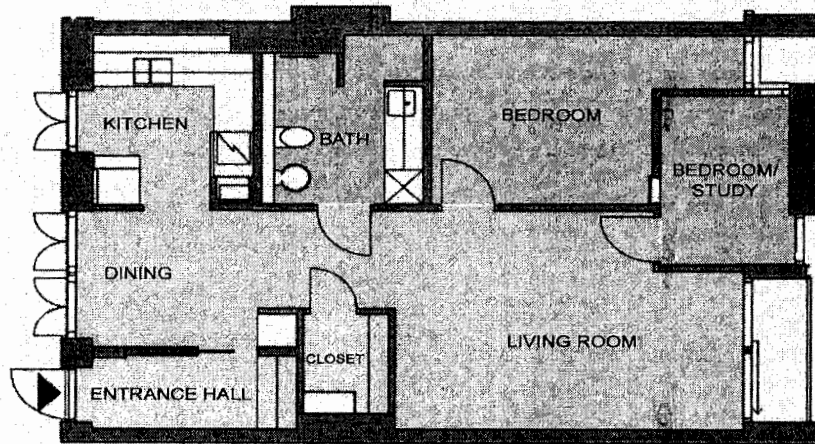
QUESTION THREE

- A) Describe the main features of at least six (6) human settlement upgrading types you know of [12]
- B) Describe three principles of healthful housing development other than Psychological. [6]

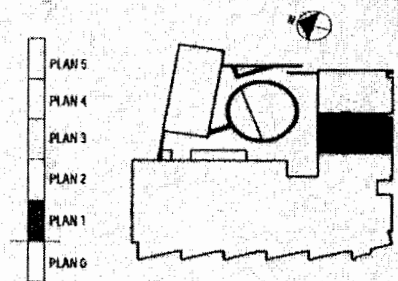
D) Given the following drawing plan outline the functional housing design considerations that have been applied and their significance

[7]

B001 / TEGELBORGEN - LÄGENHET 2 **MKB**



LÄGENHET 2 72 m²
 0 1m 5m
 Skala 1:100



Månsson & Dahlbäck arkitektkontor AB
 S:r Mångatan 4 222 29 Lund
 tel 046 211 41 70 fax 046 211 48 70

DETTA ÄR BLAD 1 AV 1 ÖVER B001/ TEGELBORGEN - LGH 2 - HÄMTAT FRÅN INTERNET ADRESS - <http://www.bp01.nu>
 PRODUCERAT AV PROPELLER MULTISHOW © COPYRIGHT 2000-06-28 • MKB FASTIGHETS AB • BOX 50 405 - 202 14 MALMÖ - 040 - 31 33 00

QUESTION FOUR

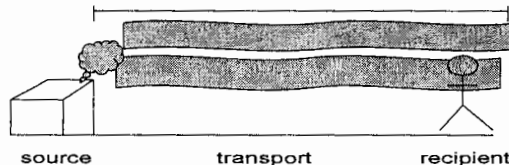
A) Using the generic criteria for defining a market economy evaluate the Swaziland Housing market. [10]

B. The following is a matrix indicating actors in the housing market. Using your answer book your task is to complete this matrix

ACTOR	ROLES	MOTIVATIONS
municipality		
Government		
residents		
tenants		
Landlords		
Banks		
Developers		
Contractors		
Cadastre agencies		
Notaries		
NGOs		

[11]

B) Write notes on air pollution in housing using the following schematic model [4]



QUESTION FIVE

- A) The use of mechanical ventilation makes it possible to use spaces, such as those within buildings that cannot be easily ventilated by natural means. Describe the various methods of mechanical ventilation. [8]
- B) Discuss housing as a political issue [5]
- C) What are the implications for the Environmental Health Officer's professional judgment and discretion in Housing? [2]
- D) Distinguish between land tenure and housing tenure systems in Swaziland [10]