

**UNIVERSITY OF SWAZILAND**

**SUPPLEMENTARY EXAMINATION PAPER – JULY 2010**

**B A DEGREE**

**TITLE OF PAPER:** INTRODUCTION TO THE GRAMMAR OF A  
SECOND LANGUAGE (SOUTHERN SOTHO)

**COURSE NUMBER:** AL304/304 IDE

**TIME ALLOWED:** THREE HOURS

**INSTRUCTIONS:**

1. ANSWER ALL THE QUESTIONS.
2. LINGUISTIC EXPRESSIONS AND  
FORMALISMS SHOULD BE USED  
WHEREVER APPROPRIATE.
3. MARKS WILL BE DEDUCTED FOR UNTIDY  
WORK, WRONG SPELLING AND  
UNGRAMMATICAL SENTENCES AND  
EXPRESSIONS.
4. ALL EXAMPLES SHOULD BE GLOSSED.

**TOTAL MARKS: 150**

**THIS PAPER IS NOT TO BE OPENED UNTIL PERMISSION HAS BEEN  
GRANTED BY THE INVIGILATOR.**

## POTSO 1

Bala tsebiso eo mme o ngolle hoteleng ho batla kamore. O ba jwetse hore o tla fihla neng mme o tla robala teng matsatsi a makae. O batle tsebiso tse hlokwang. [30]



O kgathetse na?

Tloo, o phomole le rona Maputo

**Hotele ya Girrasol**

Sebaka sa hao letsatsing

Re ka o fa:

dikamore le dibate kapa dishawara  
pono entle ya lewatle le ledamu la ho sesa  
dijo tsa hoseng, motseare le tsa bosiu  
maeto toropong ho bona dibaka tsa Maputo  
jwaleng bo boholo

O ngolle ho motsamaisi mme re tla o bokolla kamore ya hao. O re jwetse hore o batla hoetsang Maputo hore re ka o lokisetsa tsohle.

Hopola! O re jwetse hore o batla kamore e jwang hape o tla ja neng hoteleng.

Ditefo: kamore ya motho a le mong le bate.shawara	E250
kamore ya motho a le mong feela	E200
kamore ya batho ba babedi le bate	E500
kaore ya lelapa (ho robalwa batho ba bane)	E750

**Aterese: 1557 Avenida de Julius Nyerere, Maputo, Mozambique 1001**

**Fono: 266 456 7891**

## POTSO 2

*Ngola pale e le nngwe ka se seng sa dihloho tse latelang. Pale ya hao e tshwanetse ho ba le mantswe a 300-350.*

- a) Dikgathatso tsa ba batjha
- b) Leeto la Lesotho
- c) Ditoro tsa ka
- d) Aubuti Mpho o kopana le Ausi Palesa
- e) Ngola pale ya setshwantsho sena.



**[30 marks]**

(-1 for grammatical errors, -1/2 mark for spelling errors)

## POTSO 3

*Bala pale e latelang mme o arabe dipotso tsa yona.*

### Mantswe a matjha

lebatowa – province, district

lehwatata – plain

moedi – border, boundary

qhala – to spill, waste

serapa – garden, park

tlhaho – nature, untamed

lehaha - cave

letswapo - mountainside

mohopolo - thought

sephara – wide, a wide thing

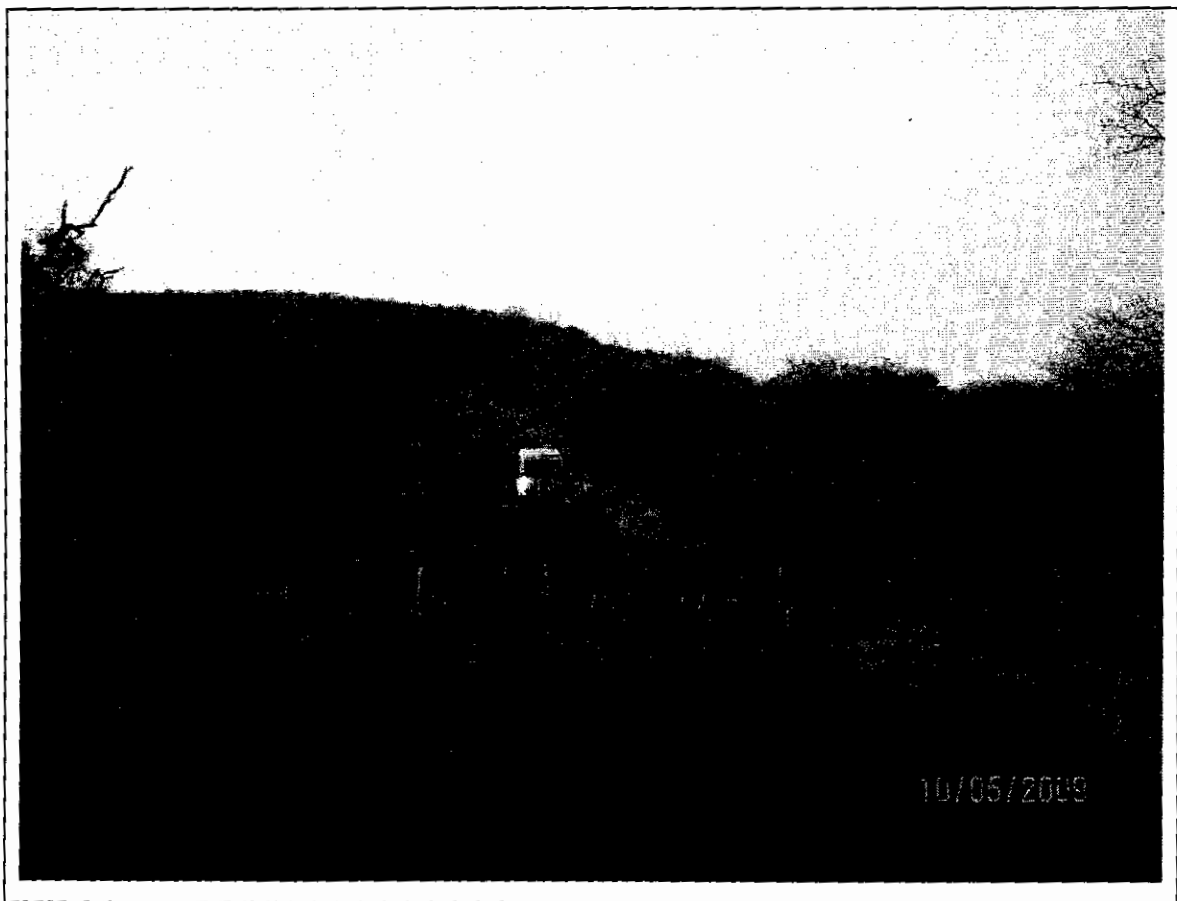
thota - high, flat rise in level ground

### Mpumalanga e ntle

Ho tloha tulong e ntle, ya meru le diphororo tsa dithaba tsa Mpumalanga, ho ya tlase merung ya tlhaho ya Serapa sa Setjhaba sa Kruger, Mpumalanga e na le tsohle bakeng sa baeti. Ha ho makatse ha e le nngwe ya ditulo tse ratwang haholo ke baeti.

5 Ha o tsamaya ka koloi mmileng o bitswang N4, o tloha Kgauteng, thota e sephara  
eo e se nang difate. Ha o le Waterval Boven, mmila e tla theohela haholo mme o  
qala ho fihla matswapong a meru. Moedi wa bophirima wa Mpumalanga ke  
Kgauteng hape moedi wa botjhabela ke dithaba tsa Lebombo. Mmila wa N4 e  
tswella ho ya tulong ya temo, difaboriki le mabankele, eo e leng Nelspruit,  
10 motsemoholo wa Mpumalanga, e tsamaya jwalo, ka hara Nelspruit ho ya moeding  
wa Mozambique, mane Komatipoort.

Serapa sa Sethjaba sa Kruger ke tulo e leng 350 km ho tloha hodimo ho ya tlase.  
Se nka tulo e kgolo ya moedi wa botjhabelo hara Aforika Borwa le Mozambique.  
Serapa seo se fumana baeti ba ka bang 2 000 ka letsatsi mme e kgona ho amohela  
15 baeti ba robaletseng teng ba 4 000 dikampong tsa sona. Tulo ena ke e nngwe ya  
mehlala e metle ya bophelo ba naheng ya Afrika Borwa mme ha ho makatse ha e  
le yona e tummeng haholo hara dirapa tsa diphoofolo tsa naha.



Baeti ba nang le tjhelete e ngata, le bona, ba ka etela dirapa tsa ikemetseng tsa diphoofolo jwalo ka Timbavati le Malamala, moeding wa Kruger.

- 20 Haebe o batla ho qhala nako Mpumalanga, ho na le dihotele tse ngata, matlo a nang le tulo ya ho robala le dijo tsa hoseng, le ditulo tsa ho etsa dikampo tseo o ka khethang ho tsona. Ha se mohopolo o mobe ho batla tulo hare le lebatowa lena hobane ho na le dintho tse ngata tseo o ka di etsang le tseo o ka di bonang.

- 25 Ho tloha toropong ya dithaba ho ya Graskop, motho o ka tsamaya ka koloi, a tsamaya a emisa ditulong tse ntle jwalo ka God's Window, Three Rondavels le Noka ya Blyde – re se lebale Bourke's Luck Potholes. Toropo ya morafu ya Pilgrim's Rest e hahuwe ka 1900 le yona e ntle haholo hobane ho na le diphororo tse ngata tulong eo, tse phahameng e le Diphororo tsa Macmac, haufi le Sabie.

- 30 Mahaheng a Sudwala a haufi le N4, dikilometa tse 30 pele o fihla Nelspruit. Ka lebaka la pale ya ona e tshosang, ke tulo e ntle eo o ka e etelang.

- 35 Dilemo tse dimillione tse fetileng, Afrika Borwa e ne e le sephara mme e batla e kwahetswe ke metsi. Mekato e metenya ya lerole le lehlabathe e ile ya bokellana hodima yona ho fihlela karolo tlase e eba thata mme ya fetoha mafika. Tulong ya Mpumalanga, lefika lena le ne le le letenya hoo karolo ya ho bitswang bokahodimo ba lefatshe, e ileng ya wa ya ho ba teng lehwatata le tlase.

- 40 Lehwatata le tlase la Mpumalanga e na le boemo ba lehodimo bo tshwanang le dinaha tse tjhesang haholo mme ditholwana tse kang di-avokado, dimengo, dibanana le dilamunu di fumaneha bakeng sa poone le ditapole tse lengwang ditulong tsa lehwatata le phahameng lebatoweng lena. Tee le kwae tse hlokanng boemo bo futhumetseng ba lehodimo selemo kaofela le tsona di ya lengwa. Meru ke ona mosebetsi wa bohlokwa lebatoweng lena kaofela. Lebeso le ho ruuwa ha dinku ho etswa ditulong tsa lehwatata le phahameng.

45 Mpumalanga ke lebatowa le nang le batho ba fapaneng ba merabe. Maswati, Bapedi, Mazulu, Basotho, Matsonga, Mandebele, Maburu le Manyesemane – re se le bale batho ba tswang Mozambique – bohle ba dula ha mmoho Mpumalanga.

Mpumalanga ke lebatowa le bontshang hore Aforika Borwa e na le merabe e fapaneng mme le lekgotfatsang baeti ba lona. Haeba o batla ho qhala nako ditulong tsa lehwatata le tlase, buisana le mokemisi wa heno mme o itshireletse ho malaria.

### A. DIPOTSO TSA KUTLWISISO

1. Fumana mantswe paleng a lekanyang le ona a latelang:

- a. tsela
- b. resefe
- c. lefatshe
- d. tjhesang
- e. merabe (2½)

2. Ngola lenanae la ditoropo tsohle tse fumanwang paleng ya Mpumalanga. (6)

3. Toropo ya mmuso wa Mpumalanga ke e fe?(1)

4. Ngola lenanae tsa dibaka tsohle tseo baeti ba ratang ho di tjhakela (7)

5. Lehwatata le tlase le hahuwe jwang? (4)

6. Ngola lenanae la batho ba dulang Mpumalanga (4)

7. Qetela lenanetafole lena.

**Dijo tse lengwang Mpumalanga**

Lehwatateng le tlase	Lehwatateng le phahameng

(5½)

**[30]**

### B. DIPOTSO TSA PUO

1. Give the singular of these words and the English

- a. dithaba (mola 1)
- b. meru (mola 1)

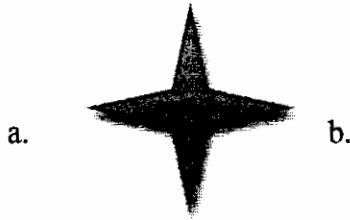
- c. matswapo (mola 7)
- d. dirapa (mola 17)
- e. diphororo (mola 28) (5)

2. Give the original forms of these words.

- a. ditulong (mola 21)
- b. bakeng (mola 3)
- c. mmileng (mola 5)
- d. naheng (16)
- e. lebatoweng (mola 39) (5)

3. Qetela tse latelang:

Leboya



Borwa (2)

- 4. Motsemoholo (mola 10) ke lentsewe le hahuwe jwang? Ke eng ka Senyesemane? (2)
- 5. Boemo ba lehodimo (mola 36) ke eng ka Senyesemane? (2)
- 6. Fana lentsewe le leng leo re ke le sebedisang bakeng sa "Re se lebale" (mola 26) (2)
- 7. Mantswa a latelang a hahuwe jwang? O a hlalositse.
  - a. hahuwe (mola 27) (2)
  - b. tshosang (mola 30) (3)
  - c. kwahetse ( mola 32) (3)
  - d. bokellana ( mola 32) (3)
  - e. lengwang ( mola 38) (3)

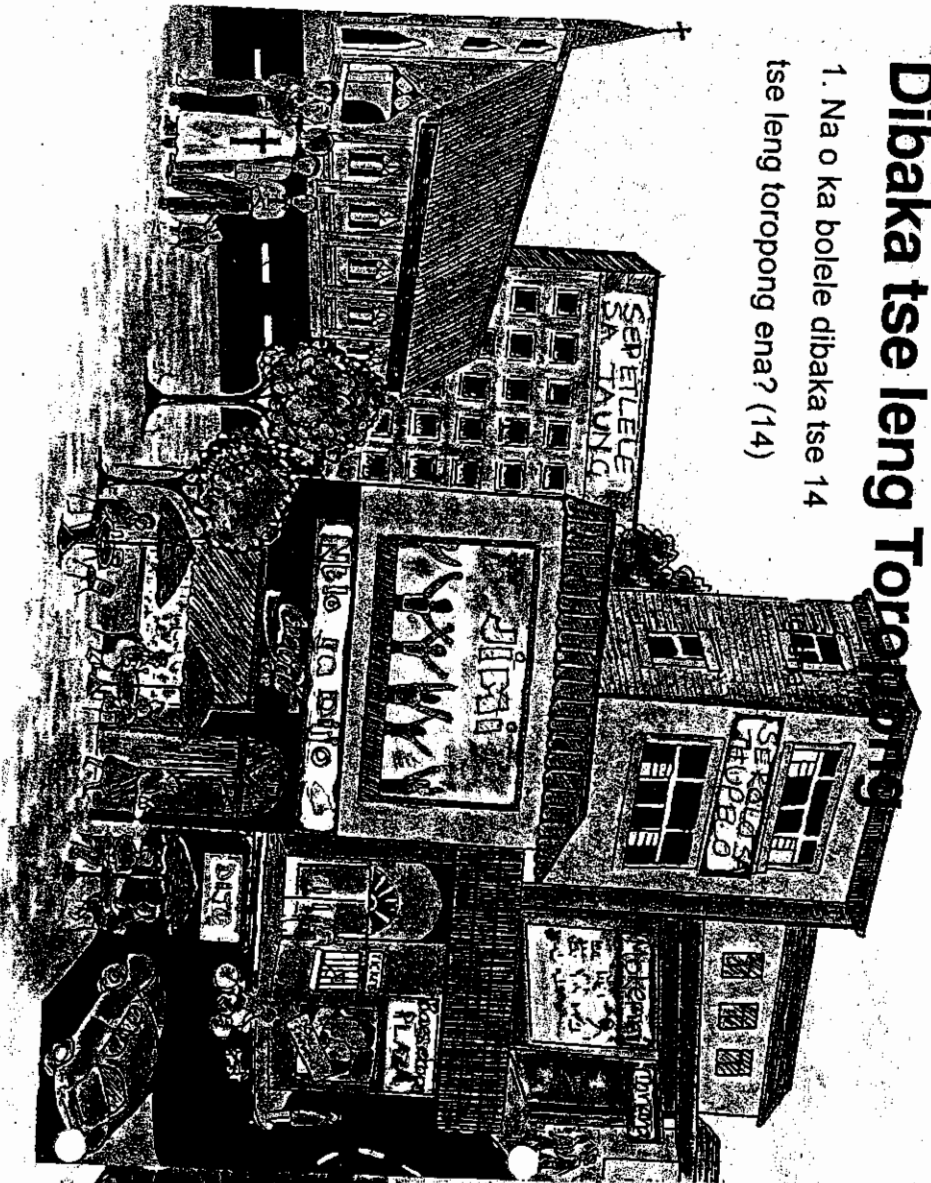
**[30]**

#### **POTSO 4**

Sheba setshwantsho se latelang mme o arabe dipotso tse tsamayang le sona. **[30]**

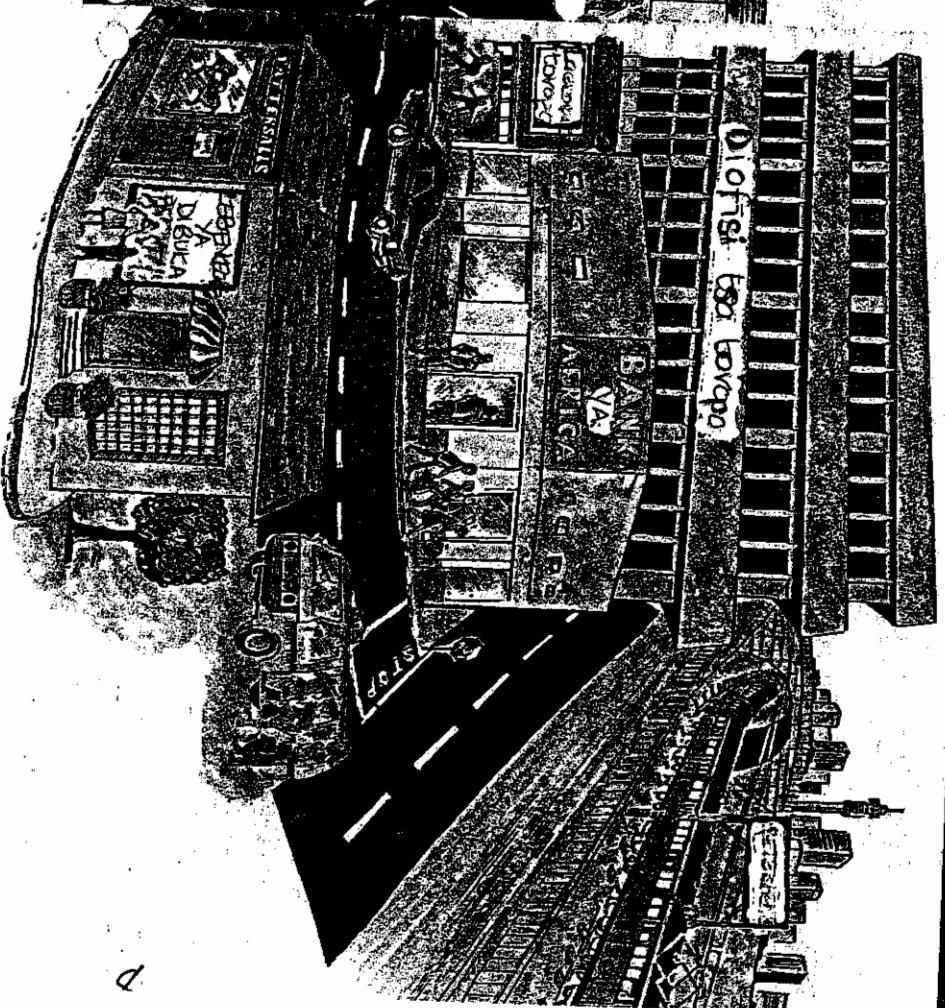
# Dibaka tse leng Torpong

1. Na o ka boele dibaka tse 14 tse leng torpong ena? (14)



2. Araba dipotso tse latelang:

- a. Batho ba ja kae?
- b. O ka shebella ditshwantsho hokae?
- c. O ka bejha dipere hokae?
- d. O batlala tihhelete ya ntlo ya hao hokae?
- e. O reka moriana hokae?
- f. Batho ba boloka tihhelete ya bona hokae?
- g. O ka reka dibuka hokae?
- h. O ka adima dibuka kae?



- i. Baeti ba palama ditekisi kae?
- j. O ka palama terene hokae?
- k. Batho ba ithakisa hokae?
- l. Moruti o rapela hokae?
- m. Barutuwa ba ithuta hokae?
- n. Dingaka le baoki ba sebetsa hokae?
- o. Ha o batla ho ithabisa torpong eo, o tla ya hokae mme o tla etsang? (16)