

UNIVERSITY OF SWAZILAND
INSTITUTE OF DISTANCE EDUCATION
SUPPLEMENTARY EXAMINATION
JULY, 2005

COURSE TITLE: E4P1: LANGUAGE LEARNING AND ACQUISITION

TIME ALLOWED 3HRS

INSTRUCTIONS

THERE ARE SIX QUESTIONS IN THIS PAPER.

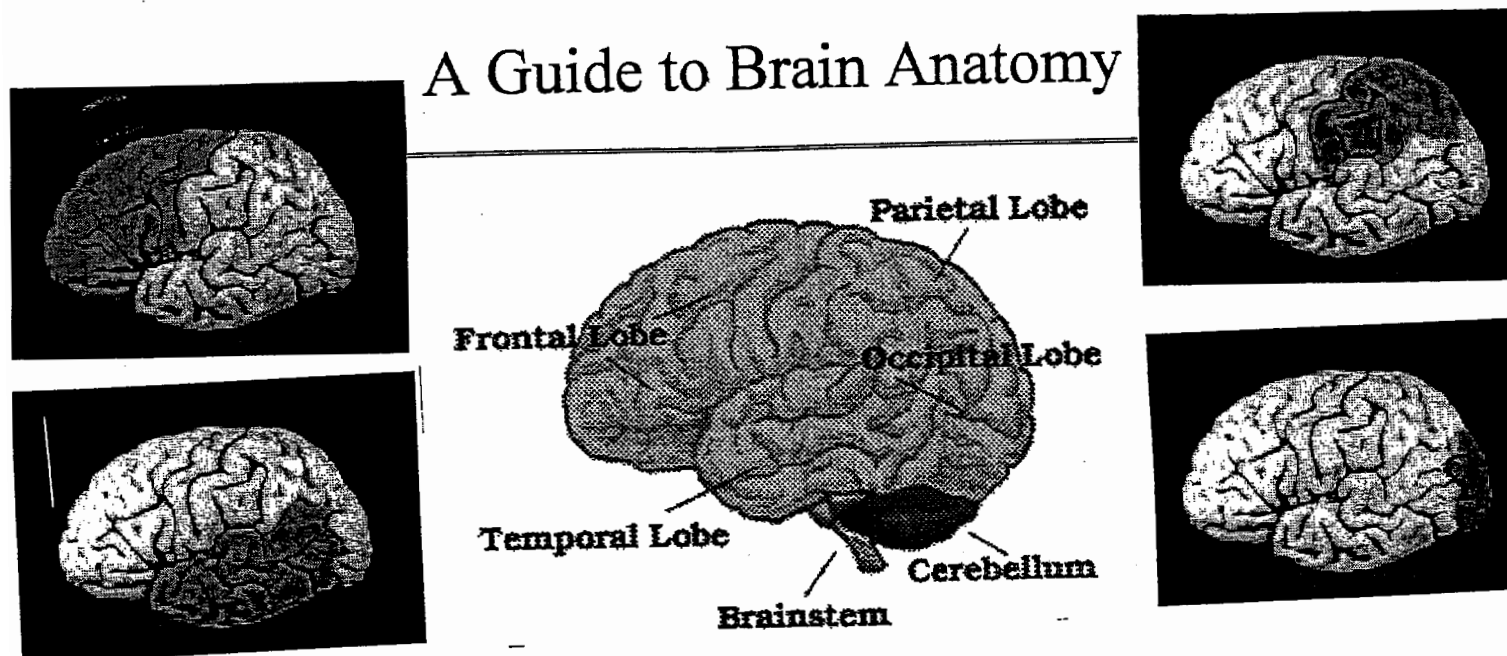
ANSWER THREE QUESTIONS ONLY.

QUESTION ONE IS COMPULSORY

DO NOT OPEN THIS PAPER BEFORE THE INVIGILATOR TELLS YOU TO DO SO.

QUESTION 1 (Compulsory)

1. (a) What are the language related functions for the parts you see on this diagram of the human brain.



8 Marks

1(b)

1. Which of the following statements is true about language acquisition?

- a) At birth, children know the elementary aspects of the language of their parents.
- b) By age one, children typically use about three words consisting of single morphemes.
- c) Babies learn a language best when they are forced to repeat phrases given to them by their parents.
- d) none of the above

2. When young children begin to learn standard grammar, they tend to over regularize it. What does this mean?

- a) They consistently use correct grammar in virtually every sentence.
- b) They excessively regulate or control what they say to the point that they become inhibited.
- c) They assume that common syntax rules apply in all situations.
- d) none of the above

3. The best time to learn a second language is in:

- a) early childhood
- b) junior and senior high school
- c) college

4. It is best to learn a second language:

- a) in a classroom where you can focus on the grammar and receive help from a teacher
- b) through constant contact with native speakers in their own society
- c) both of the above approaches to learning are equally effective.

5. Linguistic interference occurs when:

- a) people try to speak if they are very nervous and feel intimidated
- b) people learn a second language or dialect
- c) young children learn their first language

6. Which of the following statements is true about the effect of language?

- a) Bilingual people usually perform math and other complicated mental tasks with their first language.
- b) Second languages learned as adults are rarely forgotten even if they are not used regularly.
- c) neither of the above is true

12 Marks

QUESTION 2

What are the critical factors which influence the learning of a second language? In what way are the factors you have discussed relevant to the learning of a first language.

QUESTION 3

Stephen Krashen has written a lot on second language learning /acquisition. Briefly outline his theory.

QUESTION 4

Imagine you were asked to assist language teachers who are experiencing problems with learners of English as a second language. They want to know what factors could be making it difficult for the learning to go on smoothly. Which factors that affect learning of a second language would you highlight to assist these teachers.

QUESTION 5

Make brief notes on the following language learning concepts:

- a) Input and output
- b) Errors and mistakes
- c) Interlanguage
- d) Universal Grammar

QUESTION 6

Define Bilingualism, stating the different types of bilinguals we have discussed. What are the advantages and disadvantages of being bilingual?