

UNIVERSITY OF SWAZILAND

MAIN EXAMINATION PAPER 2016

TITLE OF PAPER : INTRODUCTORY ANIMAL PHYSIOLOGY

COURSE CODE : BIO271

TIME ALLOWED : THREE HOURS

INSTRUCTIONS :

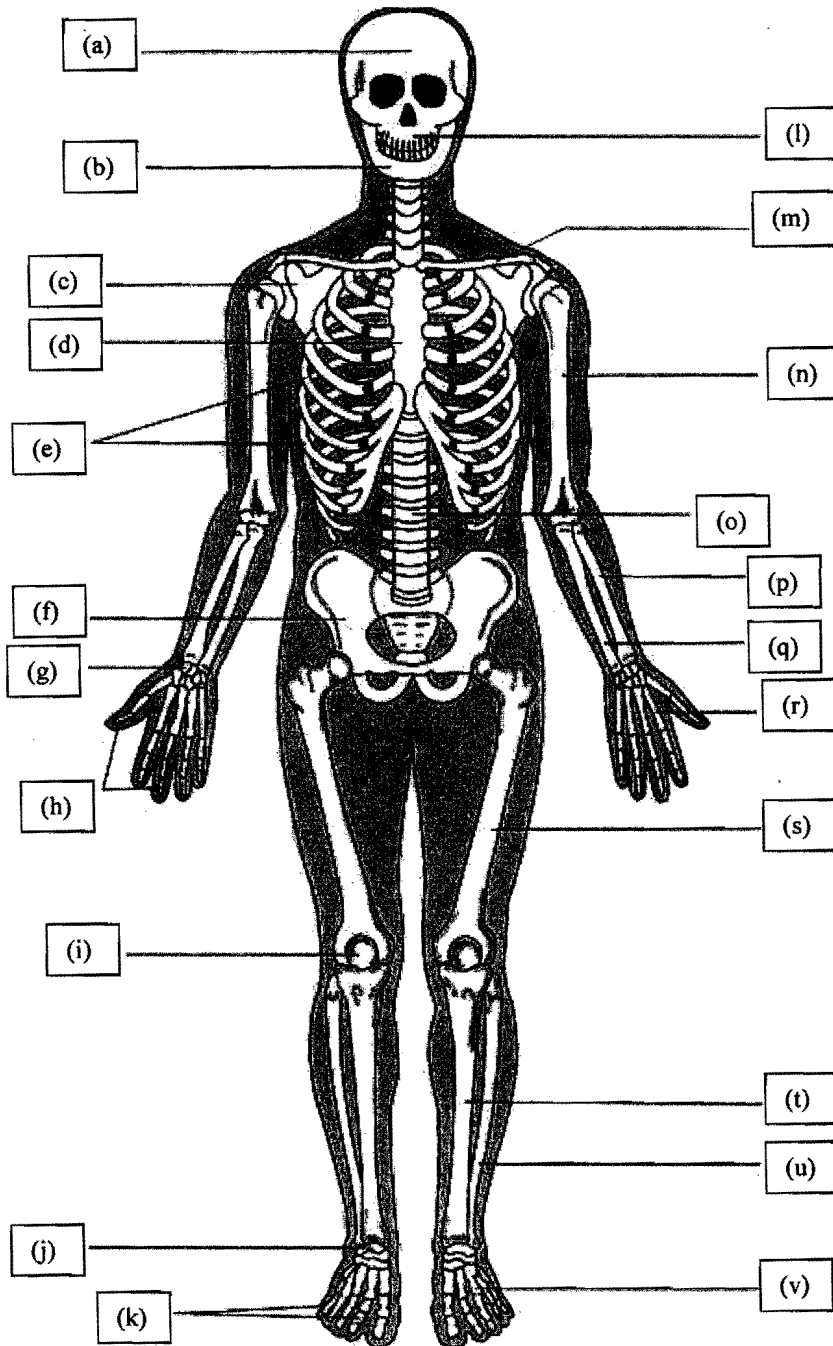
- 1. ANSWER QUESTION 1 AND ANY TWO (2) OTHER QUESTIONS**
- 2. WHEREVER POSSIBLE ILLUSTRATE YOUR ANSWERS WITH LARGE CLEARLY LABELLED DIAGRAMS**

SPECIAL REQUIREMENTS: NONE.

**THIS PAPER IS NOT TO BE OPENED UNTIL PERMISSION HAS BEEN
GRANTED BY THE INVIGILATORS**

QUESTION 1.

Label the parts of the human skeletal system marked (a) to (v).



(w) Name the type of joints found in (a)

- (x) What is the hardest bone in the human body?
- (y) What kind of bone is (t)?

[Total Marks = 50]

QUESTION 2.

- (a) Draw a fully labelled sketch of the human eye. (10 marks)
- (b) Write out a full discussion on how the eye performs its given function detailing the role played by each part. (15 marks)

[Total Marks = 25]

QUESTION 3.

- (a) Draw a fully labelled sketch of the human ear. (10 marks)
- (b) Write out a full discussion on how the ear performs its given function detailing the role played by each part. (15 marks)

[Total Marks = 25]

QUESTION 4.

Describe the structure and function of the three types of muscles found in vertebrates, employing sketches in as much as possible.

(25 Marks)