

UNIVERSITY OF ESWATINI

MAIN EXAMINATION PAPER 2019

TITLE OF PAPER : INTRODUCTORY ANIMAL PHYSIOLOGY

COURSE CODE : BIO262

TIME ALLOWED : THREE HOURS

INSTRUCTIONS :

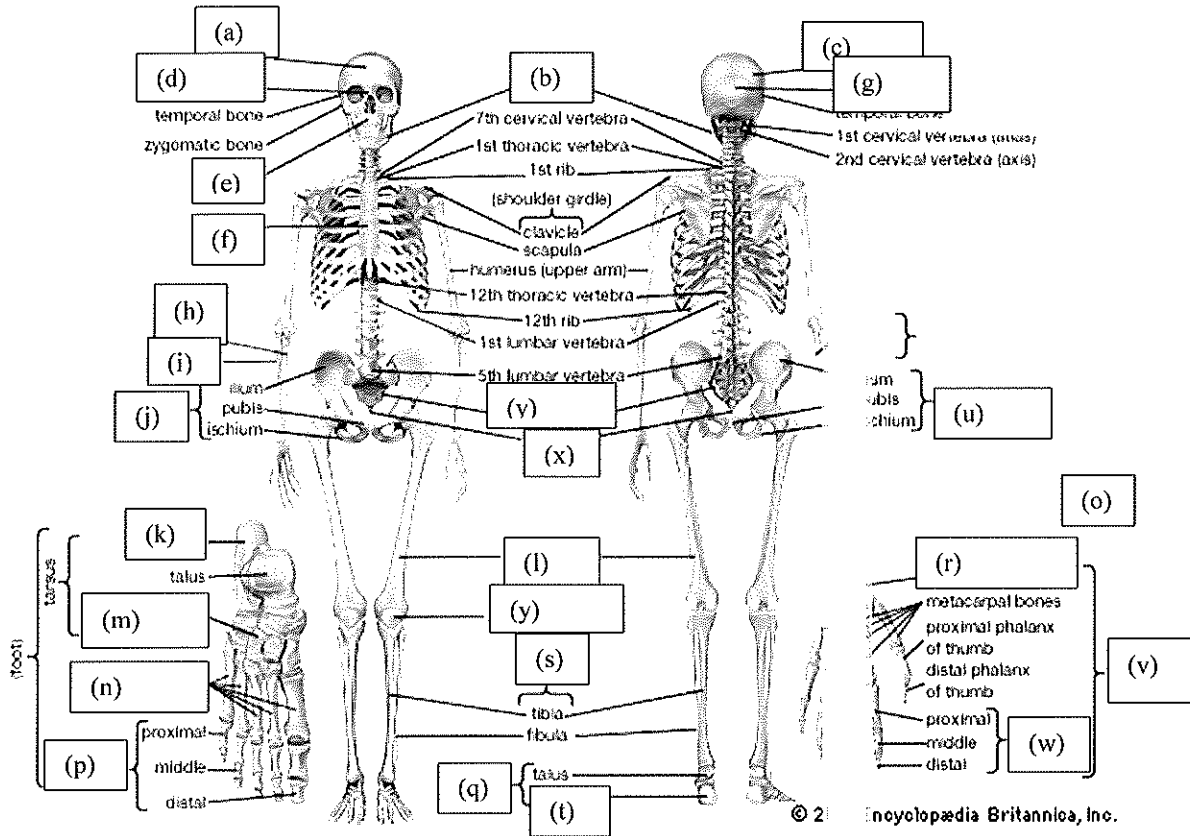
1. ANSWER QUESTION 1 AND ANY TWO (2) OTHER QUESTIONS
2. WHERE NECESSARY USE CLEARLY LABELLED DIAGRAMS TO ILLUSTRATE YOUR ANSWERS.

SPECIAL REQUIREMENTS: NONE.

**THIS PAPER IS NOT TO BE OPENED UNTIL PERMISSION HAS BEEN
GRANTED BY THE INVIGILATORS**

QUESTION 1.

Label the parts of the human skeletal system marked (a) to (y).



(50 marks)

QUESTION 2.

- (a) Draw and label a diagram of the human skin. (10 marks)
 - (b) Discuss the functions of the skin and how it performs these functions. (15 marks)
- [Total Marks = 25]

QUESTION 3.

- (a) Briefly describe the different types of muscles found in the human body. Make use of sketches and relevant examples. (15 marks)
- (b) What are the functions of muscles? (10 marks)

(25 marks)

QUESTION 4.

- (a) List and briefly discuss the levels in the hierarchy of the structural organization of organisms.
- (b) What organ systems make up the human body?

(25 Marks)